



Instructions for use

Comfort Shield® SD

(Hylan A fluid, 0.15 %)

Description

Comfort Shield is a sterile, preservative free, viscoelastic, clear shield for the cornea. It is an isotonic fluid containing solely substances that are natural components of the human eye. Therefore, **Comfort Shield** does not create any allergies and can also be used by allergic persons. **Comfort Shield** contains 1.20 mmol/L phosphate, which is within physiological levels. **Comfort Shield** eye drops may be applied as frequently as necessary to achieve relief from pain and discomfort and are compatible with all contact lenses.

Comfort Shield imitates the function of the natural tears, protects and moistens the eye surface and lubricates it. This provides long-lasting relief for eyes that are dry due to:

- Keratoconjunctivitis sicca (Sjögren syndrome)
- Injuries to the cornea, erosion, corneal surgery
- Wearing contact lenses
- Side effects of medication
- Hormonal disturbances, menopause
- Air conditioning, wind, cold, dry heat, dust, smoke, air pollution
- Work at a computer screen, long car driving, long-haul flights
- Swimming in chlorinated water

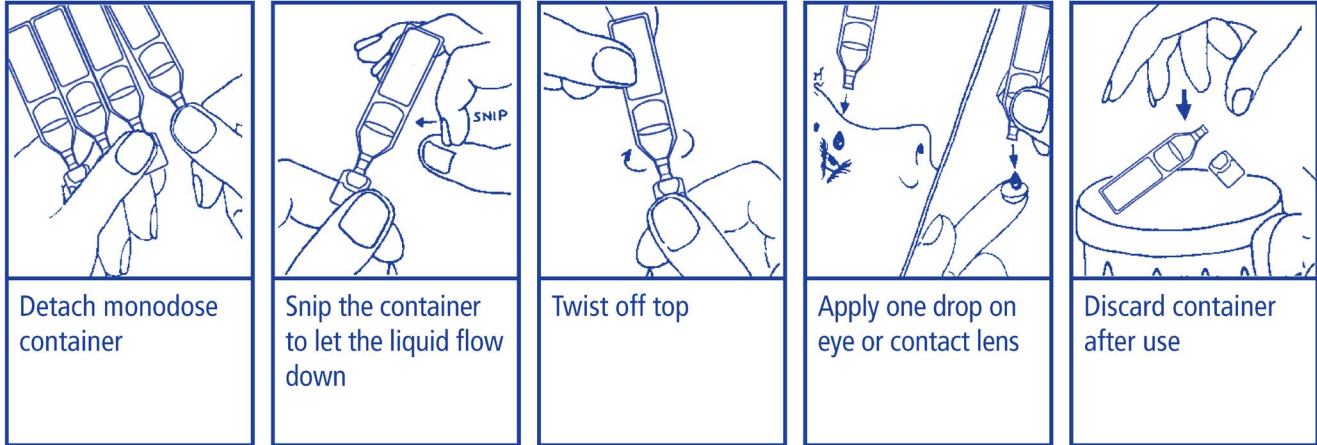
Comfort Shield eye drops contain very high molecular weight sodium hyaluronate (Hylan A; intrinsic viscosity 2.9-3.5 m³/kg). The concentration of only 0.15% in combination with the very high molecular weight accounts for strongly viscoelastic properties of the eye drops, resulting in excellent lubrication of the ocular surface and stabilization of the tear film without blurring after blinking. In an international multicenter clinical trial on patients with severe dry eyes it has been proven that **Comfort Shield** eye drops provide superior relief from symptoms of ocular surface disease, in particular discomfort, pain and unstable vision.

Chronic ocular surface disorders are frequently associated with compromised corneal nerves. The regular application of **Comfort Shield** eye drops over a period of eight weeks has been shown to result in the recovery of corneal nerves. This is of particular relevance for patients suffering from diabetes mellitus, neurotrophic keratopathy, autoimmune disease like Sjögren syndrome or graft versus host disease, and compromised nerves after ocular surgery.

Ingredients

0.15 % Hylan A, sodium chloride, sodium hydrogen phosphate, sodium dihydrogen phosphate and purified water.

Instructions for use



By gently massaging the eyelids with the eyes closed, the product will spread more quickly across the surface of the eye after application.

Storage

Store between 2°C and 25°C. Protect from frost.

Precautions and warnings

- Do not use if the monodose container is damaged.
- Do not allow the monodose container to touch your eye.
- Because of the risk of contamination, avoid contact of the opening of the monodose container with other surfaces or your hands.
- Do not use together with other medications for the eye.
- Do not apply to infected eyes.
- After use, visual acuity may be reduced temporarily; in this case do not drive or operate machinery and wait until normal vision is restored.
- Dispose the monodose container after use with household waste.



Pack size

Monodoses 15 x 0.3 ml

Manufacturer

i.com medical GmbH
Kafelerstr. 15, 81241 Munich, Germany